

## Appendix C. Data Quality Tables

**Table DQ.1: Age distribution of household population**

Single-year age distribution of household population by sex, Palestinians' Refugee Camps in Lebanon, 2006

	Males		Females			Males		Females	
	Number	Percent	Number	Percent		Number	Percent	Number	Percent
<b>0</b>	219	1.5	194	1.3	<b>41</b>	147	1.0	146	1.0
<b>1</b>	220	1.5	270	1.8	<b>42</b>	229	1.6	247	1.7
<b>2</b>	244	1.7	271	1.8	<b>43</b>	196	1.4	182	1.2
<b>3</b>	244	1.7	281	1.9	<b>44</b>	124	.9	131	.9
<b>4</b>	255	1.8	233	1.6	<b>45</b>	189	1.3	185	1.3
<b>5</b>	385	2.7	380	2.6	<b>46</b>	98	.7	125	.9
<b>6</b>	306	2.1	302	2.1	<b>47</b>	123	.9	100	.7
<b>7</b>	315	2.2	281	1.9	<b>48</b>	116	.8	106	.7
<b>8</b>	358	2.5	320	2.2	<b>49</b>	77	.5	64	.4
<b>9</b>	377	2.6	303	2.1	<b>50</b>	108	.7	167	1.1
<b>10</b>	407	2.8	415	2.8	<b>51</b>	73	.5	85	.6
<b>11</b>	358	2.5	329	2.2	<b>52</b>	91	.6	100	.7
<b>12</b>	394	2.7	390	2.7	<b>53</b>	87	.6	88	.6
<b>13</b>	398	2.8	375	2.6	<b>54</b>	68	.5	63	.4
<b>14</b>	444	3.1	348	2.4	<b>55</b>	71	.5	115	.8
<b>15</b>	427	3.0	389	2.7	<b>56</b>	54	.4	61	.4
<b>16</b>	407	2.8	378	2.6	<b>57</b>	74	.5	88	.6
<b>17</b>	344	2.4	369	2.5	<b>58</b>	74	.5	89	.6
<b>18</b>	416	2.9	350	2.4	<b>59</b>	35	.2	49	.3
<b>19</b>	314	2.2	272	1.9	<b>60</b>	134	.9	158	1.1
<b>20</b>	358	2.5	311	2.1	<b>61</b>	37	.3	40	.3
<b>21</b>	292	2.0	239	1.6	<b>62</b>	44	.3	75	.5
<b>22</b>	277	1.9	221	1.5	<b>63</b>	56	.4	58	.4
<b>23</b>	314	2.2	261	1.8	<b>64</b>	54	.4	46	.3
<b>24</b>	273	1.9	218	1.5	<b>65</b>	116	.8	161	1.1
<b>25</b>	250	1.7	234	1.6	<b>66</b>	38	.3	43	.3
<b>26</b>	207	1.4	193	1.3	<b>67</b>	42	.3	44	.3
<b>27</b>	179	1.2	222	1.5	<b>68</b>	42	.3	42	.3
<b>28</b>	157	1.1	207	1.4	<b>69</b>	20	.1	26	.2
<b>29</b>	141	1.0	184	1.3	<b>70</b>	97	.7	143	1.0
<b>30</b>	229	1.6	268	1.8	<b>71</b>	28	.2	18	.1
<b>31</b>	134	.9	184	1.3	<b>72</b>	23	.2	31	.2
<b>32</b>	176	1.2	204	1.4	<b>73</b>	31	.2	28	.2
<b>33</b>	194	1.3	225	1.5	<b>74</b>	17	.1	20	.1
<b>34</b>	152	1.1	195	1.3	<b>75</b>	87	.6	88	.6
<b>35</b>	221	1.5	281	1.9	<b>76</b>	19	.1	17	.1
<b>36</b>	169	1.2	202	1.4	<b>77</b>	25	.2	14	.1
<b>37</b>	170	1.2	231	1.6	<b>78</b>	24	.2	13	.1
<b>38</b>	207	1.4	239	1.6	<b>79</b>	3	.0	7	.0
<b>39</b>	187	1.3	194	1.3	<b>80+</b>	110	.8	156	1.1
<b>40</b>	244	1.7	292	2.0	<b>DK/Missing</b>	5	.0	3	.0
					<b>Total</b>	14449	100.0	14677	100.0

**Table DQ.2: Age distribution of eligible and interviewed women**

Household population of women age 10-54, interviewed women age 15-49, and percentage of eligible women who were interviewed, by five-year age group, Palestinians' Refugee Camps in Lebanon, 2006

	Household population of women age 10- 54	Interviewed women age 15- 49		Percentage of eligible women interviewed
	Number	Number	Percent	
<b>Age</b>				
<b>10-14</b>	na	na	na	na
<b>15-19</b>	85	82	2.1	96.5
<b>20-24</b>	346	342	8.6	98.8
<b>25-29</b>	615	610	15.4	99.2
<b>30-34</b>	801	790	20.0	98.6
<b>35-39</b>	896	891	22.5	99.4
<b>40-44</b>	784	775	19.6	98.9
<b>45-49</b>	474	465	11.8	98.1
<b>50-54</b>	414	82	2.1	.
<b>15-49</b>	4001	3955	100.0	98.9

na: not applicable

**Table DQ.3: Age distribution of eligible and interviewed under-5s**

Household population of children age 0-4, children whose mothers/caretakers were interviewed, and percentage of under-5 children whose mothers/caretakers were interviewed, by five-year age group, Palestinians' Refugee Camps in Lebanon, 2006

	Household population of children age 0-7	Interviewed children age 0-4		Percentage of eligible children interviewed
	Number	Number	Percent	
<b>Age</b>				
<b>0</b>	413	408	17.1	98.8
<b>1</b>	490	483	20.3	98.6
<b>2</b>	515	509	21.4	98.8
<b>3</b>	525	520	21.8	99.0
<b>4</b>	488	461	19.4	94.5
<b>5</b>	765	.	.	.
<b>6</b>	608	.	.	.
<b>7</b>	596	.	.	.
<b>0-4</b>	2431	2381	100.0	97.9

na: not applicable

Note: Weights for both household population of children and interviewed children are household weights. Age is based on the household schedule.

**Table DQ.4: Age distribution of under-5 children**

Age distribution of under-5 children by 3-month groups, Palestinians'  
Refugee Camps in Lebanon, 2006

	Males		Females		Total	
	Number	Percent	Number	Percent	Number	Percent
<b>Age in months</b>						
<b>0-2</b>	37	3.2	36	2.9	73	3.1
<b>3-5</b>	60	5.2	57	4.6	117	4.9
<b>6-8</b>	67	5.8	40	3.3	107	4.5
<b>9-11</b>	54	4.7	57	4.6	111	4.7
<b>12-14</b>	52	4.5	57	4.6	109	4.6
<b>15-17</b>	66	5.7	72	5.9	138	5.8
<b>18-20</b>	38	3.3	77	6.3	115	4.8
<b>21-23</b>	60	5.2	61	5.0	121	5.1
<b>24-26</b>	52	4.5	75	6.1	127	5.3
<b>27-29</b>	70	6.1	68	5.5	138	5.8
<b>30-32</b>	51	4.4	49	4.0	100	4.2
<b>33-35</b>	67	5.8	77	6.3	144	6.0
<b>36-38</b>	58	5.0	73	5.9	131	5.5
<b>39-41</b>	61	5.3	69	5.6	130	5.5
<b>42-44</b>	54	4.7	72	5.9	126	5.3
<b>45-47</b>	67	5.8	66	5.4	133	5.6
<b>48-50</b>	55	4.8	57	4.6	112	4.7
<b>51-53</b>	71	6.2	63	5.1	134	5.6
<b>54-56</b>	68	5.9	42	3.4	110	4.6
<b>57-59</b>	45	3.9	60	4.9	105	4.4
<b>Total</b>	1153	100.0	1228	100.0	2381	100.0

**Table DQ.5: Heaping on ages and periods**

Age and period ratios at boundaries of eligibility by type of information collected, Palestinians' Refugee Camps in Lebanon, 2006

<u>Age and period ratios*</u>			Eligibility boundary (lower- upper)	Module or questionnaire	
Males	Females	Total			
Age in household questionnaire					
1	.97	1.10	1.04	Lower	Child discipline and
2	1.03	.99	1.01		
3	.99	1.07	1.03		
4	.87	.78	.82	Upper	Under-5 questionnaire
5	1.22	1.25	1.23	Lower	Child labour and education
6	.91	.94	.93		
8	1.02	1.06	1.04		
9	.99	.88	.94		
10	1.07	1.19	1.13		
13	.97	1.01	.99		
14	1.05	.94	1.00	Upper	Child labour and child discipline
15	1.00	1.05	1.02	Lower	Women's questionnaire
16	1.04	1.00	1.02		
17	.88	1.01	.94	Upper	Orphaned and vulnerable children
18	.96	1.12	1.04		
23	1.09	1.12	1.10		
24	.98	.92	.95	Upper	Education
25	1.03	1.09	1.06		
48	1.10	1.18	1.14		
49	.77	.57	.66	Upper	Women's questionnaire
50	1.26	1.59	1.44		
Months since last birth in women's questionnaire					
6-11	na	.99	na	Upper	Tetanus toxoid and maternal and child health
12-17	na	1.11	na		
18-23	na	.91	na		
24-29	na	1.09	na		
30-35	na	.96	na		

\* Age or period ratios are calculated as  $x / ((x_{n-1} + x_n + x_{n+1}) / 3)$ , where x is age or period.

na: not applicable

**Table DQ.6: Completeness of reporting**

Percentage of observations missing information for selected questions and indicators,  
Palestinians' Refugee Camps in Lebanon, 2006

Questionnaire and Subject	Reference group	Percent with missing information*	Number of cases
<b>Household</b>			
Salt testing	All households surveyed	0.0	6167
<b>Women</b>			
Date of Birth	All women age 15-49		
Month only		0.4	3707
Month and year missing		0.0	3707
Completed years since first birth	All women age 15-49 with at least one live birth	2.3	519
Date of last birth	All women age 15-49 with at least one live birth		
Month only		1.3	3707
Month and year missing		0.2	3707
Date of first marriage	All ever married women age 15-49		
Month only			
Month and year missing			
<b>Under-5</b>			
Date of Birth	All under five children surveyed		
Month only		1.1	2381
Month and year missing		0.4	2381
Anthropometry	All under five children surveyed		
Height		5.0	2381
Weight		8.0	2381
Height or Weight		8.3	2381

\* Includes "Don't know" responses

Table DQ.7: School attendance by single age

Distribution of household population age 5-24 by educational level and grade attended in the Palestinians' Refugee Camps in Lebanon, 2006

Age	Pre school					Primary						Preparatory					Vocation after preparatory				Secondary			Vocation after secondary		Not-Standard		Not attending school	Total
	1	2	3	4	5	1	2	3	4	5	6	1	2	3	4	8	1	2	3	4	1	2	3	1	3	1	2		
5	4.4	31.2	50.5	0.1	0.1	2.5	0.3	0.0	0.0	0.0	0.0	0.0	0.0	0.0	0.0	0.0	0.0	0.0	0.0	0.0	0.0	0.0	0.0	0.0	0.0	0.0	0.1	10.7	100
6	0.7	4.8	15.8	0.5	0.0	68.6	4.9	1.0	0.0	0.0	0.2	0.0	0.0	0.0	0.0	0.0	0.0	0.0	0.0	0.0	0.0	0.0	0.0	0.0	0.0	0.0	0.0	3.6	100
7	0.0	0.5	0.7	0.0	0.0	28.7	65.4	3.5	0.3	0.0	0.0	0.0	0.0	0.0	0.0	0.0	0.0	0.0	0.0	0.0	0.0	0.0	0.0	0.0	0.0	0.0	0.0	0.8	100
8	0.0	0.3	0.0	0.0	0.0	2.4	36.1	56.2	3.2	0.6	0.0	0.0	0.0	0.0	0.0	0.0	0.0	0.0	0.0	0.0	0.0	0.0	0.0	0.0	0.0	0.0	0.0	1.2	100
9	0.0	0.0	0.0	0.0	0.0	0.0	4.6	43.4	46.6	3.4	0.3	0.0	0.0	0.0	0.0	0.0	0.0	0.0	0.0	0.0	0.0	0.0	0.0	0.0	0.0	0.1	0.3	1.3	100
10	0.0	0.0	0.0	0.0	0.0	0.0	1.5	9.1	40.4	42.8	2.7	0.5	0.1	0.0	0.0	0.0	0.0	0.0	0.0	0.0	0.0	0.0	0.0	0.0	0.0	0.0	0.0	2.9	100
11	0.0	0.0	0.0	0.0	0.0	0.3	0.3	2.3	14.3	38.7	35.4	4.2	1.0	0.6	0.0	0.0	0.0	0.0	0.0	0.0	0.0	0.0	0.0	0.0	0.0	0.0	0.0	2.9	100
12	0.0	0.0	0.0	0.0	0.1	0.8	0.4	0.3	4.6	14.9	32.1	27.9	12.2	1.5	0.4	0.0	0.0	0.0	0.0	0.0	0.1	0.0	0.0	0.3	0.0	0.0	0.0	4.3	100
13	0.0	0.0	0.0	0.0	0.0	0.1	0.3	0.6	1.8	4.3	11.3	20.9	27.5	19.6	2.1	0.0	0.0	0.0	0.0	0.0	0.9	0.0	0.1	0.0	0.0	0.0	0.1	9.7	100
14	0.1	0.0	0.0	0.0	0.0	0.0	0.0	0.1	0.4	1.9	4.8	11.1	18.6	30.3	16.3	0.0	0.0	0.1	0.0	0.1	0.5	0.0	0.3	0.0	0.0	0.0	0.0	14.5	100
15	0.0	0.0	0.0	0.0	0.0	0.0	0.0	0.6	0.1	0.6	0.9	3.1	9.8	27.6	24.3	0.0	0.7	0.4	0.2	0.1	4.7	1.0	0.0	0.0	0.1	0.1	0.0	25.3	100
16	0.0	0.0	0.0	0.0	0.0	0.0	0.0	0.0	0.0	0.0	0.3	1.9	3.7	11.2	20.0	0.1	3.1	1.0	0.4	0.0	16.2	2.7	0.3	0.0	0.0	0.0	0.0	38.9	100
17	0.0	0.0	0.0	0.0	0.0	0.0	0.1	0.0	0.0	0.0	0.0	0.4	1.8	3.5	6.4	0.1	4.7	3.4	0.3	0.0	16.3	12.9	4.3	0.9	0.1	0.0	0.0	44.7	100
18	0.0	0.0	0.0	0.0	0.0	0.0	0.0	0.0	0.0	0.0	0.0	0.0	0.0	0.0	0.0	0.0	0.0	0.0	0.0	0.0	0.0	0.0	0.0	0.0	0.0	0.0	0.0	100.0	100
19	0.0	0.0	0.0	0.0	0.0	0.0	0.0	0.0	0.0	0.0	0.0	0.0	0.0	0.0	0.0	0.0	0.0	0.0	0.0	0.0	0.0	0.0	0.0	0.0	0.0	0.0	0.0	100.0	100
20	0.0	0.0	0.0	0.0	0.0	0.0	0.0	0.0	0.0	0.0	0.0	0.0	0.0	0.0	0.0	0.0	0.0	0.0	0.0	0.0	0.0	0.0	5.6	0.0	0.0	0.0	0.0	94.4	100
21	0.0	0.0	0.0	0.0	0.0	0.0	0.0	0.0	0.0	0.0	0.0	0.0	0.0	0.0	0.0	0.0	0.0	0.0	0.0	0.0	0.0	0.0	0.0	0.0	0.0	0.0	0.0	100.0	100
22	0.0	0.0	0.0	0.0	0.0	0.0	0.0	0.0	0.0	0.0	0.0	0.0	0.0	0.0	0.0	0.0	0.0	0.0	0.0	0.0	0.0	0.0	0.0	0.0	0.0	0.0	0.0	100.0	100
23	0.0	0.0	0.0	0.0	0.0	0.0	0.0	0.0	0.0	0.0	0.0	0.0	0.0	0.0	0.0	0.0	0.0	0.0	0.0	0.0	0.0	0.0	0.0	0.0	0.0	0.0	0.0	100.0	100
24	0.0	0.0	0.0	0.0	0.0	0.0	0.0	0.0	0.0	0.0	0.0	0.0	0.0	0.0	0.0	0.0	0.0	0.0	0.0	0.0	0.0	0.0	0.0	0.0	0.0	0.0	0.0	100.0	100
Total	0.4	2.8	5.1	0.0	0.0	6.6	7.5	8.4	8.6	8.5	6.8	5.7	6.1	7.8	5.7	0.0	0.7	0.4	0.1	0.0	3.0	1.3	0.4	0.1	0.0	0.0	0.0	13.9	100

**Table DQ.8: Sex ratio at birth among children ever born and living**

Sex ratio at birth among children ever born, children living, and deceased children, by age of women, Palestinians' Refugee Camps in Lebanon, 2006

	Children Ever Born			Children Living			Children deceased			Number of women
	Number of sons ever born	Number of daughters ever born	Sex ratio	Number of sons living	Number of daughters living	Sex ratio	Number of deceased sons	Number of deceased daughters	Sex ratio	
<b>Age</b>										
<b>15-19</b>	25	21	1.19	25	21	1.19	0	0	.	82
<b>20-24</b>	251	235	1.07	244	232	1.05	7	3	2.33	342
<b>25-29</b>	734	822	.89	711	806	.88	23	16	1.44	610
<b>30-34</b>	1457	1348	1.08	1390	1310	1.06	59	38	1.55	790
<b>35-39</b>	2137	1892	1.13	2002	1834	1.09	132	57	2.32	891
<b>40-44</b>	1952	1824	1.07	1839	1749	1.05	106	75	1.41	775
<b>45-49</b>	1300	1282	1.01	1208	1213	1.00	90	66	1.36	465
<b>Total</b>	7856	7424	1.06	7419	7165	1.04	417	255	1.64	3955

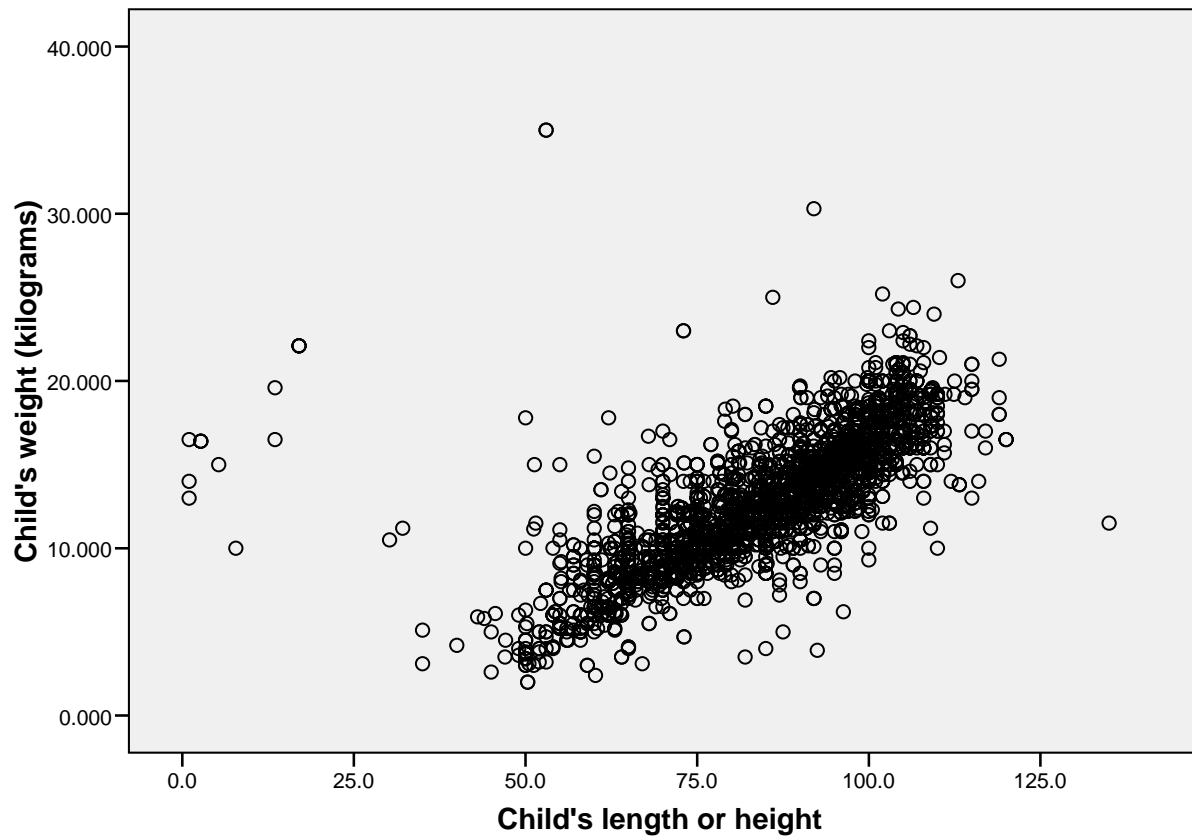
Note: Sex ratios are calculated as number of males/ number of females

**Table DQ.9: Distribution of women by time since last birth**

Distribution of women aged 15-49 with at least one live birth, by months since last birth during past 3 years, Palestinians' Refugee Camps in Lebanon, 2006

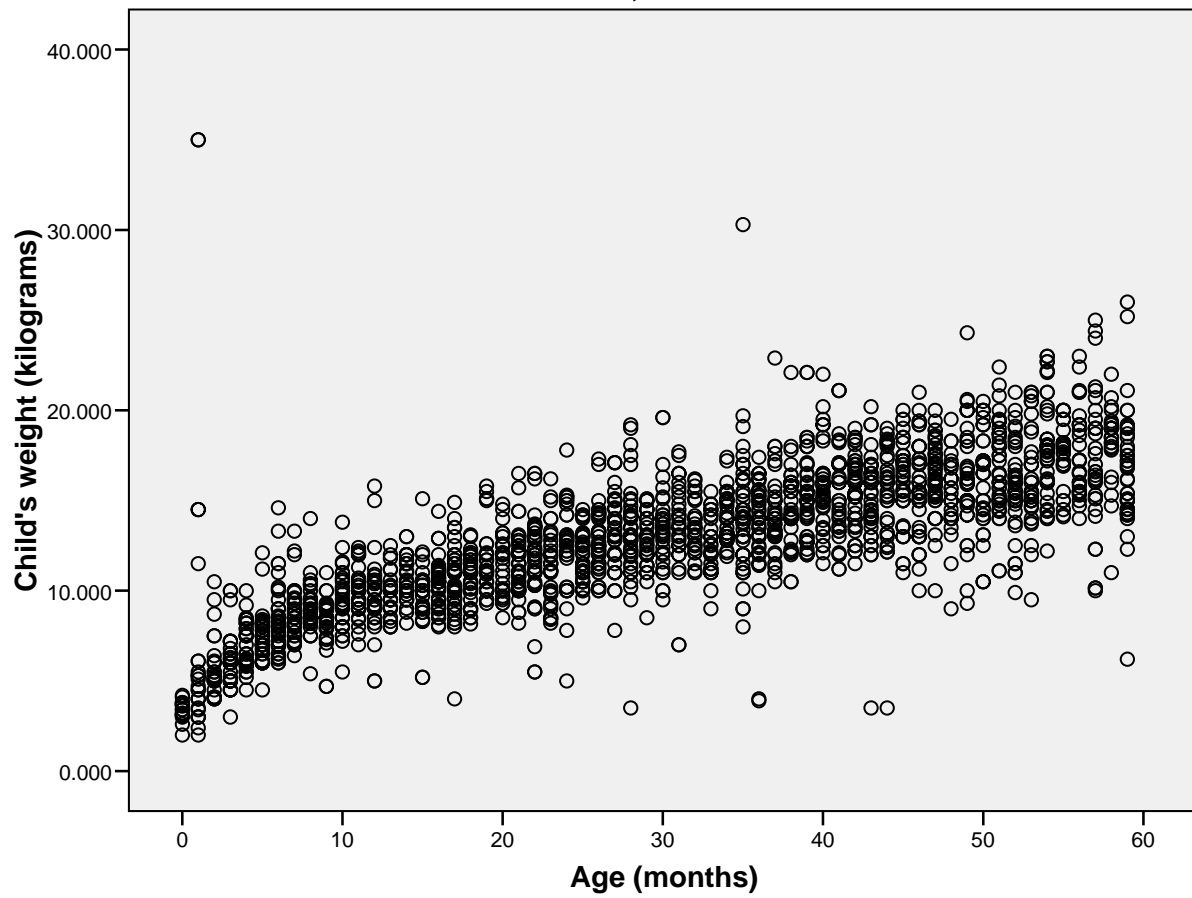
Months since last birth					
	Number	Percent		Number	Percent
<b>0</b>	17	1.4	<b>21</b>	37	2.9
<b>1</b>	23	1.8	<b>22</b>	31	2.5
<b>2</b>	30	2.4	<b>23</b>	26	2.1
<b>3</b>	35	2.8	<b>24</b>	26	2.1
<b>4</b>	35	2.8	<b>25</b>	41	3.3
<b>5</b>	41	3.3	<b>26</b>	40	3.2
<b>6</b>	35	2.8	<b>27</b>	46	3.7
<b>7</b>	33	2.6	<b>28</b>	33	2.6
<b>8</b>	32	2.5	<b>29</b>	38	3.0
<b>9</b>	36	2.9	<b>30</b>	31	2.5
<b>10</b>	38	3.0	<b>31</b>	22	1.8
<b>11</b>	37	2.9	<b>32</b>	23	1.8
<b>12</b>	38	3.0	<b>33</b>	31	2.5
<b>13</b>	32	2.5	<b>34</b>	36	2.9
<b>14</b>	44	3.5	<b>35</b>	45	3.6
<b>15</b>	35	2.8			
<b>16</b>	41	3.3	<b>Total</b>	1255	100.0
<b>17</b>	56	4.5			
<b>18</b>	37	2.9			
<b>19</b>	33	2.6			
<b>20</b>	41	3.3			

**Figure 1. Scatterplot of weight (Y-axis) by height (x-axis), Palestinians' Refugee Camps in Lebanon, 2006**

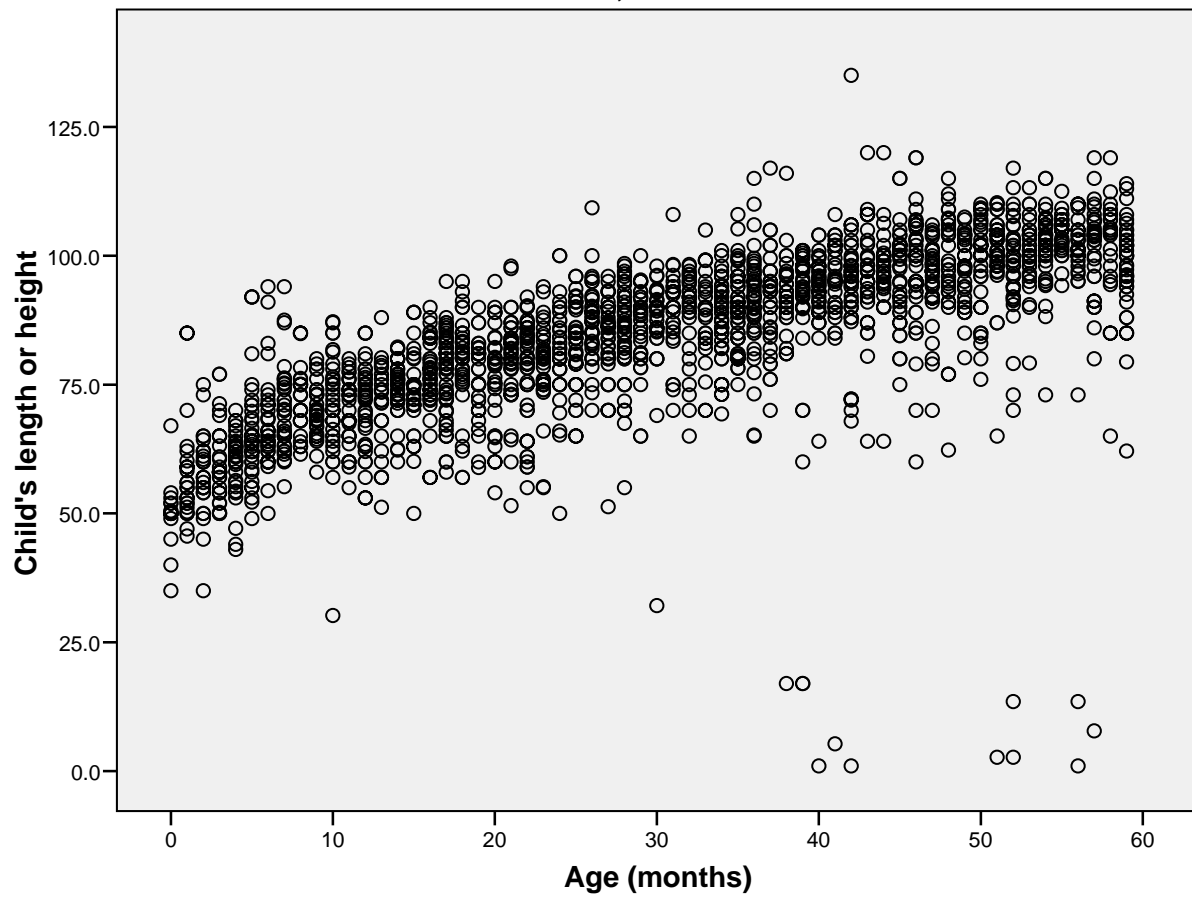




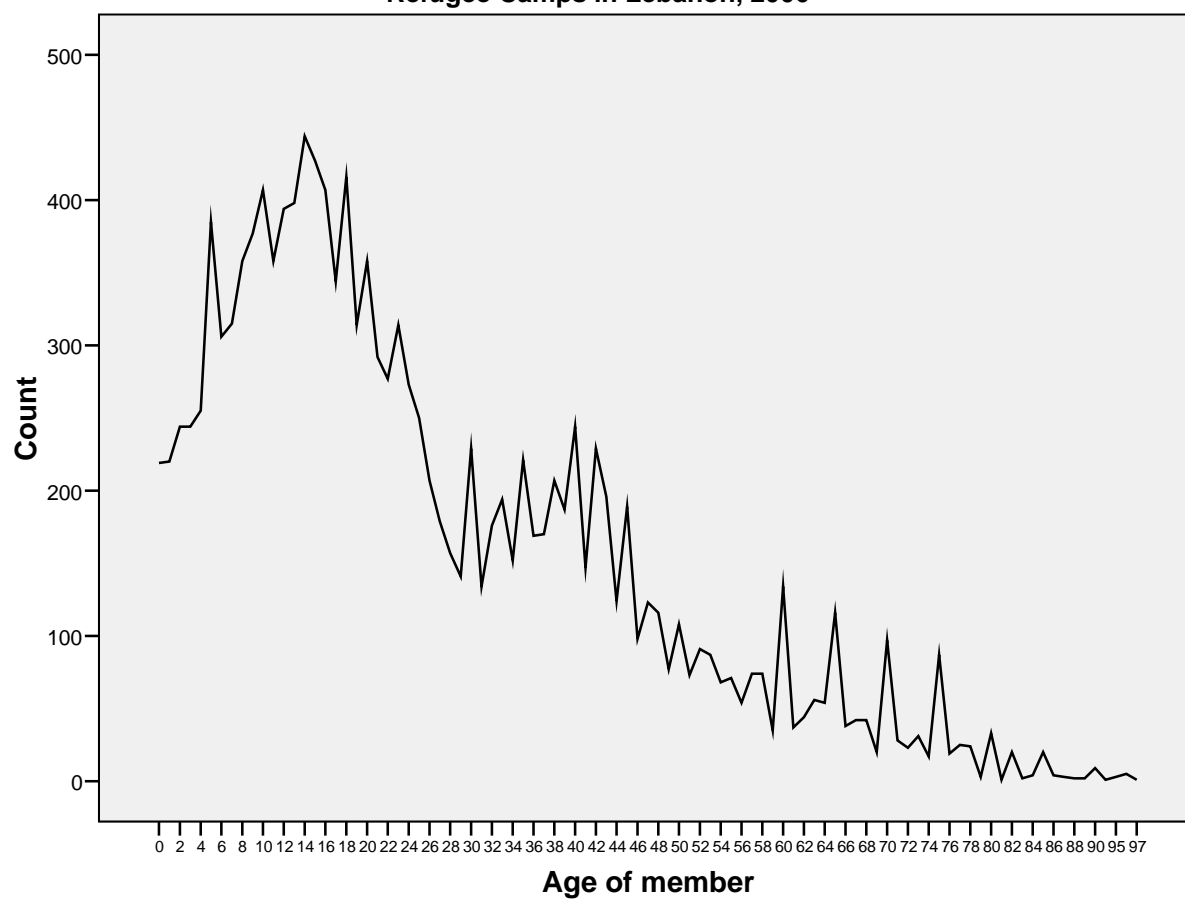
**Figure 2. Scatterplot of weights of children by age in months, Palestinians' Refugee Camps in Lebanon, 2006**



**Figure 3. Scatterplot of heights of children by age in months, Palestinians' Refugee Camps in Lebanon, 2006**



**Figure 4. Number of male household population (Y-axis) by single ages (X-axis), Palestinians' Refugee Camps in Lebanon, 2006**



**Figure 5. Number of female household population (Y-axis) by single ages (X-axis),  
Palestinians' Refugee Camps in Lebanon, 2006**

